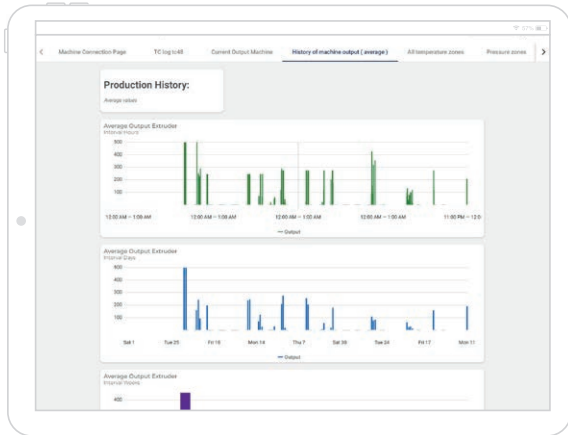
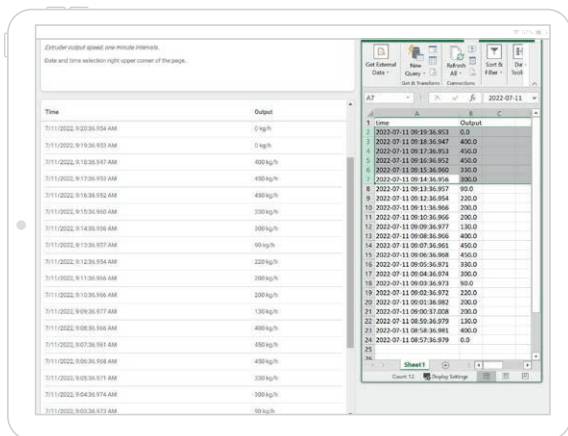


Reporting tool to review and analyse data. The data is stored online in a web based database (Cloud)



Reporting tool to review and analyse data. The data is stored online in a web based database (Cloud)

Custom reports and datasets can be created from the exported data. Exported data can easily be integrated in Office and database applications



Real-time notifications

Receive e-mail and/or push notifications with critical warnings or maintenance alerts on a wide variety of (smart) devices.

If desired, all process parameters can be exported to custom designed reports.



Industrieweg 10, 4401 LB Yerseke • The Netherlands
+31 113 57 14 95 • office@meaf.com

WWW.MEAF.COM



MEAF Agile Data M.A.D.

Data connection from MEAF machines with the OPC-UA standard (Industry 4.0).



REALTIME INFORMATION

DATA LOGGING

REAL-TIME STATUS NOTIFICATIONS

CUSTOMISED REPORTS



Realtime production parameters

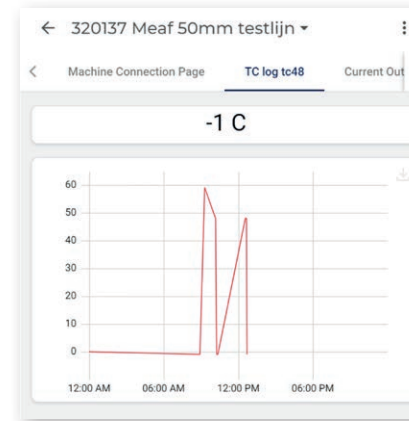
The data displayed is web based and can be viewed on any web enabled device PC, tablet or smartphone.



Customisable layouts

Free to use, standard data layout for website and smart-app with personal machine information.

User interface can be customised to personal style.



Maintenance alerts:	active alerts		
Gearbox ok	3 Hour	0 Hour	
Melt pump propshaft ok	4 Hour	0 Hour	
Roller bearings ok	4 Hour	0 Hour	
Co-extruder 1 gearbox ok	3 Hour	0 Hour	
Melt pump propshaft 1 ok	3 Hour	0 Hour	
Co-extruder 2 gearbox ok	5 Hour	0 Hour	
Main motor bearings ok	0 Hour	0 Hour	
Co-extruder 3 gearbox ok	0 Hour	0 Hour	
Melt pump propshaft 3 ok	0 Hour	0 Hour	
Hydraulic unit ok	6 Hour	0 Hour	
Main motor bearings ok	0 Hour	0 Hour	
fx1 ok	0 Hour	0 Hour	

Machine data logging

Machine data can be stored in the Cloud, or is stored locally (in case the internet connection is offline).

This accumulation of data will provide you with historic data to monitor machine performance over a longer period of time.

Easy to use

Data values can be linked to any OPC-UA compatible data system

